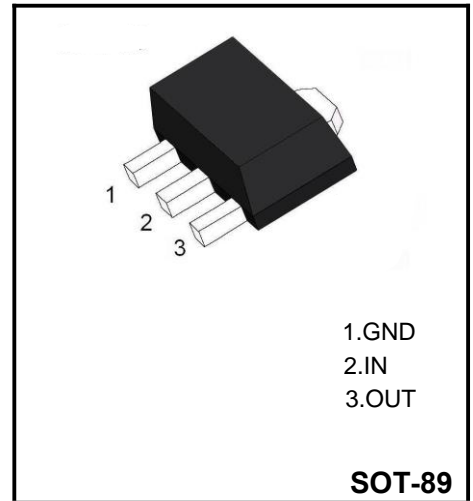


Three-Terminal Negative Voltage Regulator



Features

- Maximum output current I_{om} : 0.1A.
- Output voltage V_o : -6V.
- Continuous total dissipation P_d : 0.5 W

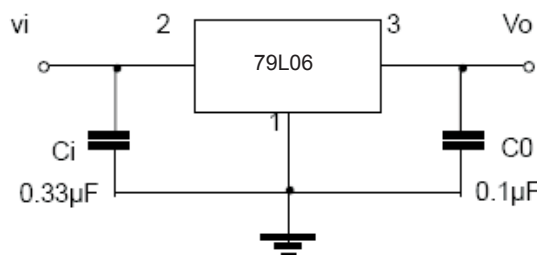
Absolute Maximum Ratings ($T_a=25^\circ\text{C}$)

Parameter	Symbol	Rating	Unit
Input Voltage	V_i	-30	V
Operating junction temperature range	T_{OPR}	-55 to +125	$^\circ\text{C}$
Storage Temperature Range	T_{STG}	-55 to +150	$^\circ\text{C}$

Electrical Characteristics ($T_a=25^\circ\text{C}$, unless otherwise specified)

Parameter	Symbol	Test conditions	Min	Typ	Max	Unit
Output voltage	V_o	$T_j=25^\circ\text{C}$	-5.75	-6.0	-6.25	V
		$-8\text{V} \leq V_i \leq -20\text{V}, I_o=1\text{mA}-40\text{mA}$	-5.7	-6.0	-6.3	V
		$I_o=1\text{mA}-70\text{mA}$	-5.7	-6.0	-6.3	V
Load regulation	ΔV_o	$T_j=25^\circ\text{C}, I_o=1\text{mA}-100\text{mA}$		21	80	mV
		$T_j=25^\circ\text{C}, I_o=1\text{mA}-40\text{mA}$		11	40	mV
Line regulation	ΔV_o	$-8\text{V} \leq V_i \leq -20\text{V}, T_j=25^\circ\text{C}$		20	175	mV
		$-9\text{V} \leq V_i \leq -20\text{V}, T_j=25^\circ\text{C}$		15	125	mV
Quiescent current	I_q	25°C		3.9	6.0	mA
Quiescent current change	ΔI_q	$0^\circ\text{C} < T_j < 125^\circ\text{C}, -9\text{V} \leq V_i \leq -20\text{V}$			1.5	mA
	ΔI_q	$0^\circ\text{C} < T_j < 125^\circ\text{C}, 1\text{mA} \leq I_o \leq 40\text{mA}$			0.1	mA
Output noise voltage	V_n	$10\text{Hz} \leq f \leq 100\text{kHz}, T_j=25^\circ\text{C}$		44		μV
Ripple rejection	RR	$-9\text{V} \leq V_i \leq -19\text{V}, f=120\text{Hz}$	40	48		dB
Dropout voltage	V_d	$T_j=25^\circ\text{C}$		1.7		V

Typical applications



Ordering information

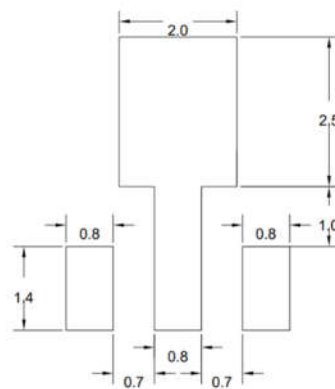
Package	Packing Description	Base Quantity	Packing Quantity
SOT-89	Tape/Reel,7"reel	1000pcs/Reel	6000PCS/Box 30000PCS/Carton

Package Dimensions

SOT-89

Dim	Millimeter		Inches	
	Min.	Max.	Min.	Max.
A	1.40	1.60	0.055	0.063
b	0.32	0.52	0.013	0.020
b1	0.38	0.58	0.015	0.023
c	0.35	0.45	0.014	0.018
D	4.40	4.60	0.173	0.181
D1	1.45	1.65	0.057	0.065
D2	1.70	1.80	0.067	0.071
E	2.30	2.60	0.091	0.102
E1	3.95	4.25	0.156	0.167
E2	1.80	2.00	0.071	0.079
e	1.40	1.60	0.055	0.063
e1	2.80	3.20	0.110	0.126
L	0.90	1.20	0.035	0.047

The recommended mounting pad size



UNIT:MM

Disclaimer

The information presented in this document is for reference only. Guangdong Youfeng Microelectronics Co.,Ltd. reserves the right to make changes without notice for the specification of the products displayed herein to improve reliability, function or design or otherwise. The product listed herein is designed to be used with ordinary electronic equipment or devices, and not designed to be used with equipment or devices which require high level of reliability and the malfunction of which would directly endanger human life (such as medical instruments, transportation equipment, aerospace machinery, nuclear-reactor controllers, fuel controllers and other safety devices), YFW or anyone on its behalf, assumes no responsibility or liability for any damages resulting from such improper use of sale. This publication supersedes & replaces all information previously supplied. For additional information, please visit our website <https://www.yfwdiode.com>, or consult YFW sales office for further assistance.